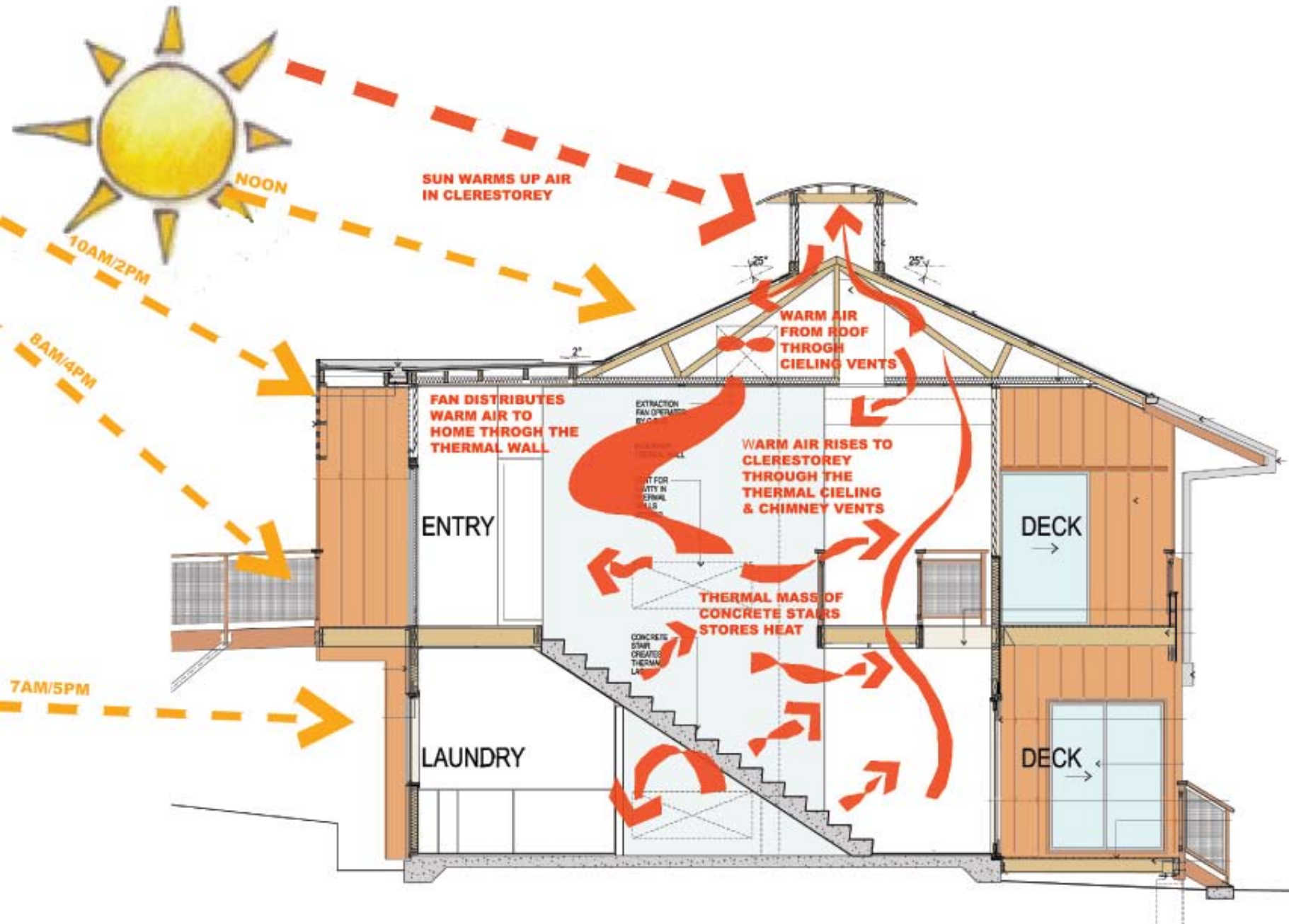


WINTER: Warm air from the roof is drawn through the ceiling vents to warm the cool house. Fans distribute warm air to the house through the thermal wall. The thermal mass of the central concrete stairs and brick walls stores heat, which helps to warm the house. Warm air rises to clerestory through the thermal ceiling and chimney vents. Because the louvres are closed in winter, the warm air in the roof circulates back into the house for warmth.



Sustainable Home Brisbane
4 Gordon Circuit,
Seventeen Mile Rocks 4173

OPEN
Wednesday 2-5pm
Weekends 1-5pm