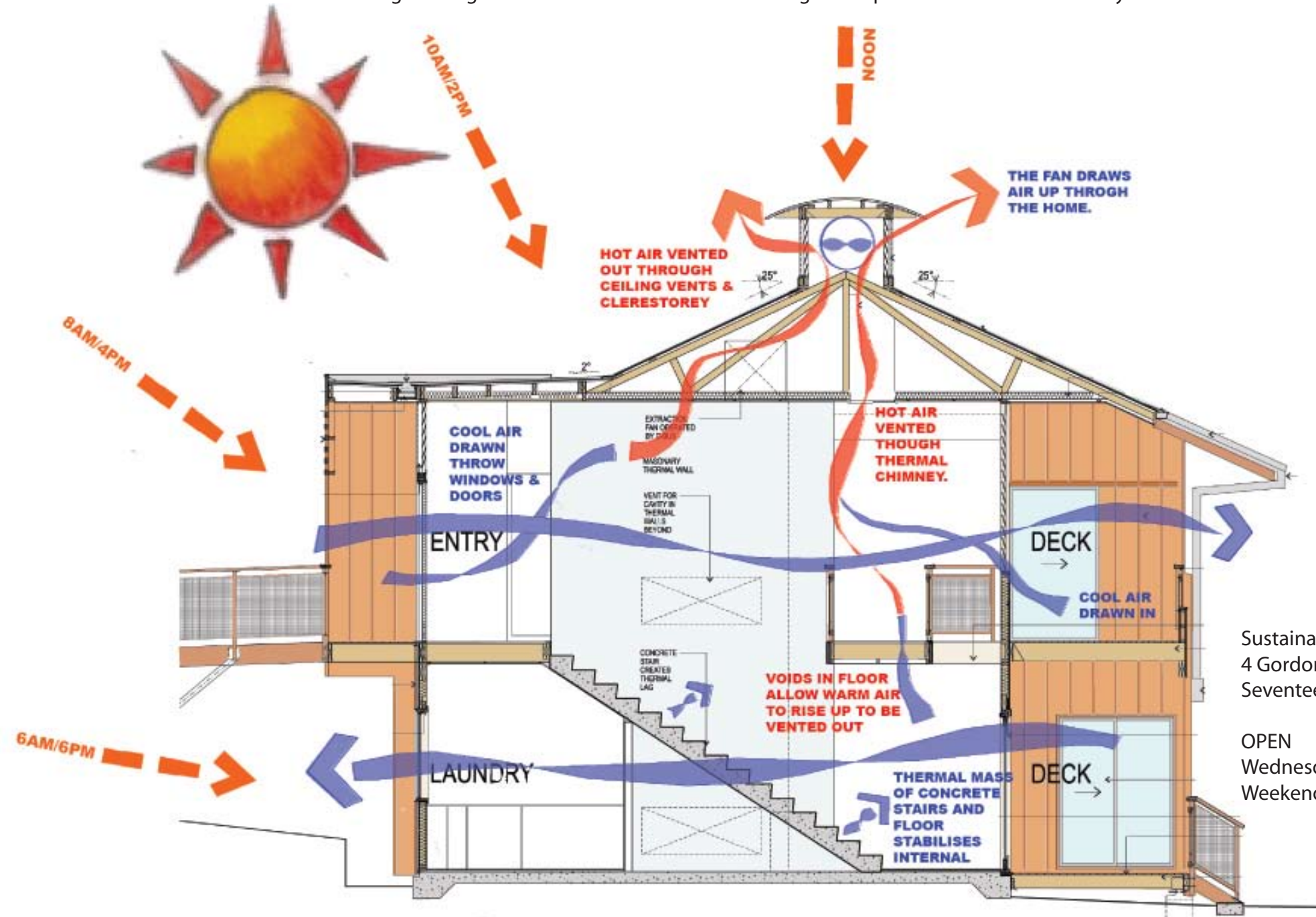


SUMMER: Cool air is drawn through the windows and doors. The thermal mass of the central concrete stairs, brick walls and concrete slab stabilises the internal temperature. Floor voids enable warm air to rise up through the ceiling. Warm air is vented to the outside, through ceiling vents and then to the outside through the open louvres in the clerestory.



Sustainable Home Brisbane  
4 Gordon Circuit,  
Seventeen Mile Rocks 4173

OPEN  
Wednesday 2-5pm  
Weekends 1-5pm